

# METAL TUBE

# 2025

Metal Tube aspires to be Egypt's leading manufacturer of steel pipes, scaffolding, and metal formwork. We strive to provide outstanding steel storage solutions. Metal Tube also seeks a prominent role in providing solutions for arts and sports steel structures .





# ABOUT OUR COMPANY

## A BRIEF STORY ABOUT THE COMPANY

Metal Tube was established in 1992 and commenced production in with an objective to provide quality material to the national and international market. The journey from supplying black steel pipes to becoming one of the leading manufacturers of galvanized tubes, cold rolled and hot rolled steel has been filled with accomplishments and accolades.

- A respectable enterprise shall not only excel in achieving reasonable profits, but more importantly, shall be eager to undertake its due social responsibilities. Deep-rooted in the developments of Egypt industry over the past sixty plus years and with its “go global” strategy, Metal Tube was established in 1992 and commenced production in with an objective to provide quality material to the national and international market. The journey from supplying black steel pipes to becoming one of the leading manufacturers of galvanized tubes, cold rolled and hot rolled steel has been filled with accomplishments and accolades.



# Vision

Metal Tube aspires to be Egypt's leading manufacturer of steel pipes, scaffolding, and metal formwork. We strive to provide outstanding steel storage solutions. Metal Tube also seeks a prominent role in providing solutions for arts and sports steel structures. In addition, Metal Tube is committed to establishing training programs to improve employee performance and efficiency. The company is certified ISO 9001, 14001, and 45001 certificates.

# Mission

Metal Tube is committed to developing human cadres of engineers, technicians, and administrators capable of developing the product and increasing its efficiency in line with stakeholder expectations which has a positive effect on providing a high-quality product. The company is eager to implement the sustainable development goals in their manufacturing, provide environmental awareness for the community, and occupational safety and health.



# A MESSAGE FROM COMPANY FOUNDER



\* A respectable enterprise shall not only excel in achieving reasonable profits, but more importantly, shall be eager to undertake its due social responsibilities. Deep-rooted in the developments of Egypt industry over the past sixty plus years and with its “go global” strategy, Metal Tube was established in 1992 and commenced production in with an objective to provide quality material to the national and international market. The journey from supplying black steel pipes to becoming one of the leading manufacturers of galvanized tubes, cold rolled and hot rolled steel has been filled with accomplishments and accolades. The quality of our products and services are widely recognized in storage, building, arts and sports industrial sector. Metal Tube has spread its business operations far and wide influencing the daily life of hundreds millions of people all over the Egypt. We must take up our due responsibilities to meet the high expectations from various circles of the society.

**ENG. SAMY FAHIM GABRIEL**

# CHAIRMAN WORD



\* Metal Tube’s mission is to manufacture, develop, and deliver superior quality products to the market that improve our customers’ daily lives. We are steadfast in our commitment to quality and customer satisfaction, The quality of our products and services are widely recognized in storage, building, arts and sports industrial sector. Metal Tube has spread its business operations far and wide influencing the daily life of hundreds millions of people all over the Egypt. We must take up our due responsibilities to meet the high expectations from various circles of the society.

**ENG. RAFIK S. GABRIEL**



# Milestone Achieved



1989

Initiated production of steel welded tubes- longitudinal welding

2004

Launched production of formworks and scaffolds

2007

Inaugurated production of pallets and storage systems

2018

Turned into a unique design and manufacturing hub

2019

Excelled in designing and manufacturing sports structures

2020

Specialized in metal artwork manufacturing



# CORE VALUES

- Social commitment
- Teamwork
- Leadership
- Continuous improvement
- Scientific excellence



## Metal Tube in Numbers



**+250**  
Employees



**+1000**  
Sites Across  
Egypt



**+700**  
Tons Per  
Month  
Production  
Capacity



**+100**  
Metal  
Products



**+30**  
Years Industry  
Leadership in  
Egypt



**+70**  
Clients Served  
in the Mena  
Region

---

# Metal Tube Quality Policy

- Commitment to applying the requirements of the specifications (ISO 9001 – ISO 14001 – ISO 45001)
- Compliance with the local and international specifications of the products and compliance with the laws, legislations and other requirements related to the environment, occupational safety and health, as well as the requirements of the customer.
- Continuous development and improvement in the performance of operations, meeting customer expectations and working to satisfy them.





---

# WORK PROCESSES



1

**shoot Metal Cutting**



2

**Sheet Metal and  
Tube Bending**



3

**Band Saw Cutting  
Machine**



4

**Robotic Welding  
Machine**



5

**Eco Friendly  
Electrostatic Painting**



6

**Metal Forming By  
Pressing**



7

**Sand Blasting**



8

**Metal Galvanization**



---

# Our Unique selling points

- High quality standards
- Low labor cost
- Same time zone as western Europe
- Profitability and has short lines of decision .
- Proximity
- Wide Network in Egyptian Industry
- Ease of communication and cosmopolitan management

## What Do we Offer?

- METAL PROJECTS
  - METAL SCAFFOLDING
  - METAL FORMWORK
  - METAL STORAGE
  - METAL SPORTS
  - METAL ARTS
-



# METAL PROJECTS



Formwork scaffolding  
in Madinty city



The new Egyptian Opera at  
the administrative capital



The new Egyptian Opera at  
the administrative capital



Monorail stations in the  
Administrative Capital



The Coptic Orthodox  
Cultural Centre



Farid Habib Hospital



# METAL PROJECTS



Noraco Mall at the  
administrative capital



Magdy Yacoub Heart  
Centre, 6th of October



Solar Systems



Metal Formwork and  
Scaffolding at Orascom



Manufacturing of special  
production lines



Metal Formwork and  
Scaffolding projects

---

# Metal Tube Sectors

## Metal Scaffolding Systems

The company has technical expertise and technological capabilities that allow it to work in various fields ... although the largest field and many experiences is the manufacture of scaffolding and metal formwork. The company was also distinguished and occupied the first place in the manufacture of storage containers in all its forms and types. With the multiplicity of fields and products, Metal Tube has become one of the most important companies producing metal industries.

**Cuplock  
system**

**Light frame  
system**

**Prop jack  
system**

**shore brace  
system**

- **Cuplock system**

Metal Tube Cuplock is a complete integrated system providing access scaffolding and formwork slab support suitable for use in vast range of applications from light, medium to heavy duty scaffolding, shoring, supporting vertical loads and other construction engineering works.

**Unit Beam**

**pin**

**Connector**

**P-Head Jack Solid**



**Cuplock Cantilever  
Bracket**



**U-Head Jack Solid**



**Cuplock Ledger**



**Cuplock Vertical**





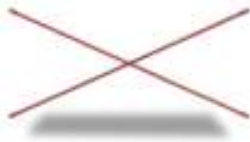
# Metal Tube Sectors

## Metal Scaffolding Systems

- Light frame system

Metal Tube manufactures standard or custom fabricated access panels according to construction requirements. Each Frame incorporates quick action flip lock fittings for attachment or horizontal and diagonal members. With easily integrated ladders, façade scaffolds are easily accessible on every lever allowing free movement between levels while maintaining a full sense of safety.

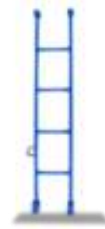
Cross Brace



Ledger



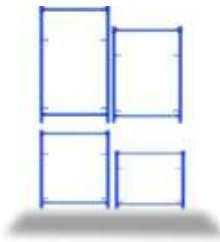
Ladder



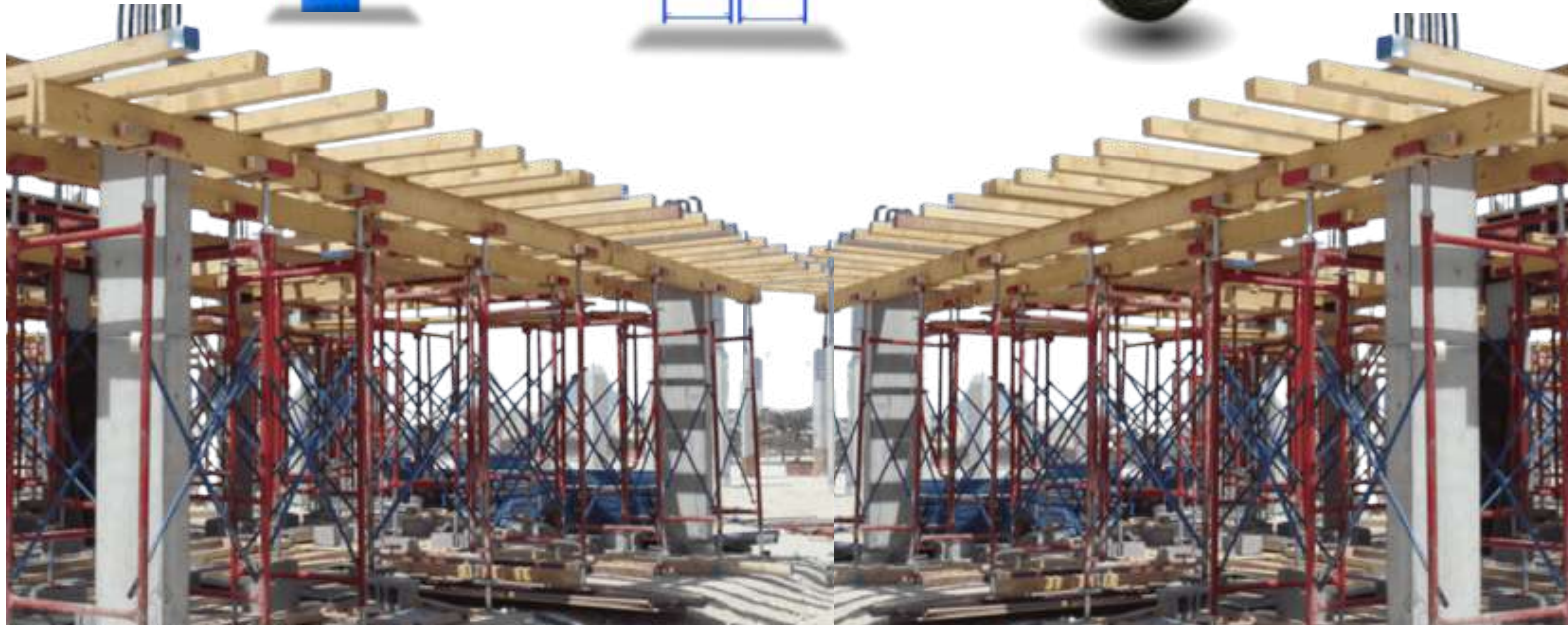
Steel blank



Frames



Caster Wheel





# Metal Tube Sectors

## Metal Scaffolding Systems



- Prop Jack system

Props fully confirm to the requirements of BS 4074 : 1982 and have been tested in accordance with BS 5507 Part 3 : 1982. Props are manufactured from high quality material (st.37 ) with a Powder coated painted finish (80 – 100) micron for long life and are highly resistant to site wear and tear. Tubes are manufactured using longitudinal electric resistance welding (ERW). Props can be used on all types of building construction or for any type of use where an adjustable load bearing member is required. The high tensile steel pin is located through a slot in the outer section and a hole on the inner section for coarse adjustment. The cast collar located below the pin gives fine adjustment for levelling or striking. The rolled thread ensures no loss of material or strength at this critical point.





# Metal Tube Sectors

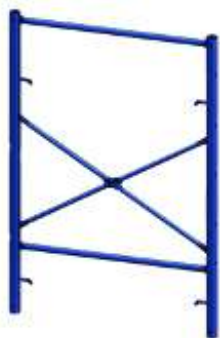
## Metal Scaffolding Systems

- **Shore Brace System:**

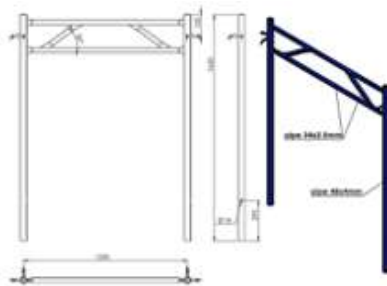
Shore brace is the most economical system for heavy civil engineering project due to high load capacity.

Shore-brace table is very flexible, so it is one of the best systems for building constructions.

Shore-brace can be connected to each other, so shore-brace table is available to any height. Vertically adjusting can be done either by post head jack. Designed to be used with telescopic shore-brace frame to provide height adjustments.



**Shore Brace Frame**



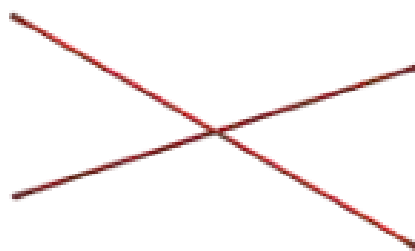
**Shore Brace Telescopic Frame**



**U-Head Jack Solid**



**P-Head Jack Solid**



**Cross Brace**

# Metal Tube Sectors

## Metal Steel Traditional Form Work Systems

### 1- Push Pull Prop



#### Push – Pull (Standard)

Description	Tube	Max. Range	Min. Range	Weight (Kg)	Working Load (Ton)
PPS 131	1.5"x2.5 mm	1.50	1.00	12.40	2.98
PPS 132	2.0"x2.5 mm	1.50	1.00	13.70	4.35
PPS 161	1.5"x2.5 mm	1.80	1.30	13.30	2.50
PPS 162	2.0"x2.5 mm	1.80	1.30	14.85	3.88
PPS 201	1.5"x2.5 mm	2.34	1.64	14.31	1.66
PPS 202	2.0"x2.5 mm	2.34	1.64	16.10	2.99
PPS 252	2.0"x2.5 mm	2.84	2.14	18.00	2.21
PPS 302	2.0"x2.5 mm	3.35	2.65	20.00	1.58
PPS 352	2.0"x2.5 mm	3.84	3.14	24.00	1.20



# Metal Tube Sectors

## Metal Steel Traditional Form Work Systems



### Push – Pull (Heavy)

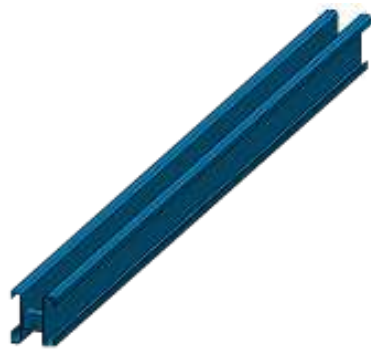
Description	Tube	Max. Range	Min. Range	Weight (Kg)	Working Load (Ton)
PPH 303	3.0"x3 mm	3.35	2.65	28.75	5.40
PPH 304	3.0"x4 mm	3.35	2.65	33.75	6.65
PPH 353	3.0"x3 mm	3.84	3.14	31.00	4.55
PPH 354	3.0"x4 mm	3.84	3.14	37.00	5.75
PPH 403	3.0"x3 mm	4.35	3.65	33.50	3.65
PPH 404	3.0"x4 mm	4.35	3.65	40.50	4.50
PPH 454	3.0"x4 mm	4.85	4.15	54.00	3.65
PPH 501	3.0"x3 mm	5.35	4.65	38.25	2.30
PPH 502	3.0"x4 mm	5.35	4.65	47.10	3.00
PPH 551	3.0"x3 mm	5.85	5.15	40.50	2.00
PPH 552	3.0"x4 mm	5.85	5.15	50.50	2.50
PPH 601	3.0"x3 mm	6.55	5.65	59.50	3.50
PPH 602	3.0"x4 mm	6.55	5.65	74.00	4.50
PPH 651	4.0"x3 mm	6.95	6.05	62.25	3.10
PPH 652	4.0"x4 mm	6.95	6.05	77.50	4.00
Sp. Push Pull	5.0"x4 mm	Variable According to Client Requirement			
Sp. Push Pull	6.0"x4 mm				

# Metal Tube Sectors

Metal Steel Traditional  
Form Work Systems



2- S-Beam 12 cm



NO.	DESCRIPTION
1	S Beam 12 cm ( L = 1 M )
2	S Beam 12 cm ( L = 1.5 M )
3	S Beam 12 cm ( L = 2 M )
4	S Beam 12 cm ( L = 2.5 M )
5	S Beam 12 cm ( L = 3 M )
6	S Beam 12 cm ( L = 3.5 M )
7	S Beam 12 cm ( L = 3.6 M )
8	S Beam 12 cm ( L = 4 M )
9	S Beam 12 cm ( L = 4.5 M )
10	S Beam 12 cm ( L = 5 M )
11	S Beam 12 cm ( L = 5.5 M )
12	S Beam 12 cm ( L = 6 M )

# Metal Tube Sectors

## Metal Steel Traditional Form Work Systems

### 3- Soldier Soldier 10 with Holes



NO.	DESCRIPTION
1	Soldier 10 with Holes L = 0.5 m
2	Soldier 10 with Holes L = 0.75 m
3	Soldier 10 with Holes L = 1 m
4	Soldier 10 with Holes L = 1.25 m
5	Soldier 10 with Holes L = 1.5 m
6	Soldier 10 with Holes L = 1.75 m
7	Soldier 10 with Holes L = 2 m
8	Soldier 10 with Holes L = 2.25 m
9	Soldier 10 with Holes L = 2.5 m
10	Soldier 10 with Holes L = 2.75 m
11	Soldier 10 with Holes L = 3 m
12	Soldier 10 with Holes L = 3.25 m
13	Soldier 10 with Holes L = 3.5 m
14	Soldier 10 with Holes L = 3.75 m
15	Soldier 10 with Holes L = 4 m
16	Soldier 10 with Holes L = 4.5 m
17	Soldier 10 with Holes L = 5 m
18	Soldier 10 with Holes L = 5.5 m
19	Soldier 10 with Holes L = 6 m



# Metal Tube Sectors

## Metal Steel Traditional Form Work Systems

### 3- Soldier Soldier 10 with Slots



NO.	DESCRIPTION
1	Soldier 10 with Slots L = .865 m
2	Soldier 10 with Slots L = 1.17 m
3	Soldier 10 with Slots L = 1.475 m
4	Soldier 10 with Slots L = 1.78 m
5	Soldier 10 with Slots L = 2.085 m
6	Soldier 10 with Slots L = 2.39 m
7	Soldier 10 with Slots L = 2.695 m
8	Soldier 10 with Slots L = 3 m
9	Soldier 10 with Slots L = 3.61 m
10	Soldier 10 with Slots L = 4.22 m
11	Soldier 10 with Slots L = 4.83 m
12	Soldier 10 with Slots L = 5.44 m
13	Soldier 10 with Slots L = 6.05 m

# Metal Tube Sectors

## Metal Steel Formwork Systems

The formwork system is a system that relies on a set of products that are integrated with each other to form a specific template for pouring concrete in concrete structures. Metal Tube products are characterized by high accuracy and the use of the latest technology machines.

Our high-accuracy products seamlessly integrate to create specialized templates for concrete pouring in various structures.

By innovating four different formwork products:

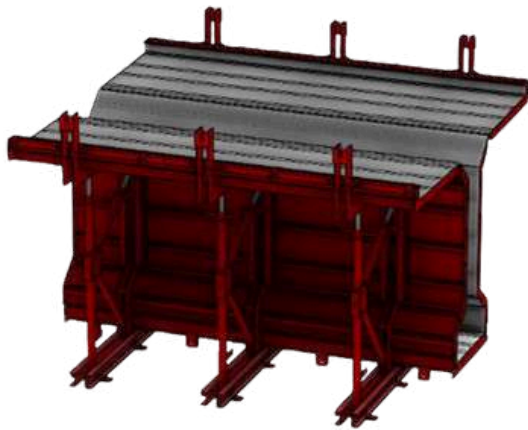
- Circular Columns
- Crowns
- Rectangular Columns
- Precast Molds



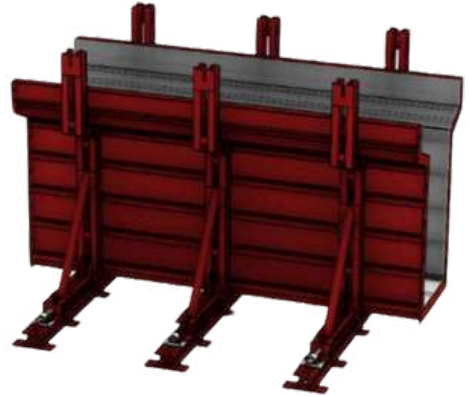


# Precast Steel Molds

Precast steel mold is the most effective way to get ready concrete products to be used in projects with high quality in no time. There are different mechanisms that could be used to get the best results according to product shape and client requirements.



**1. Hinged system**

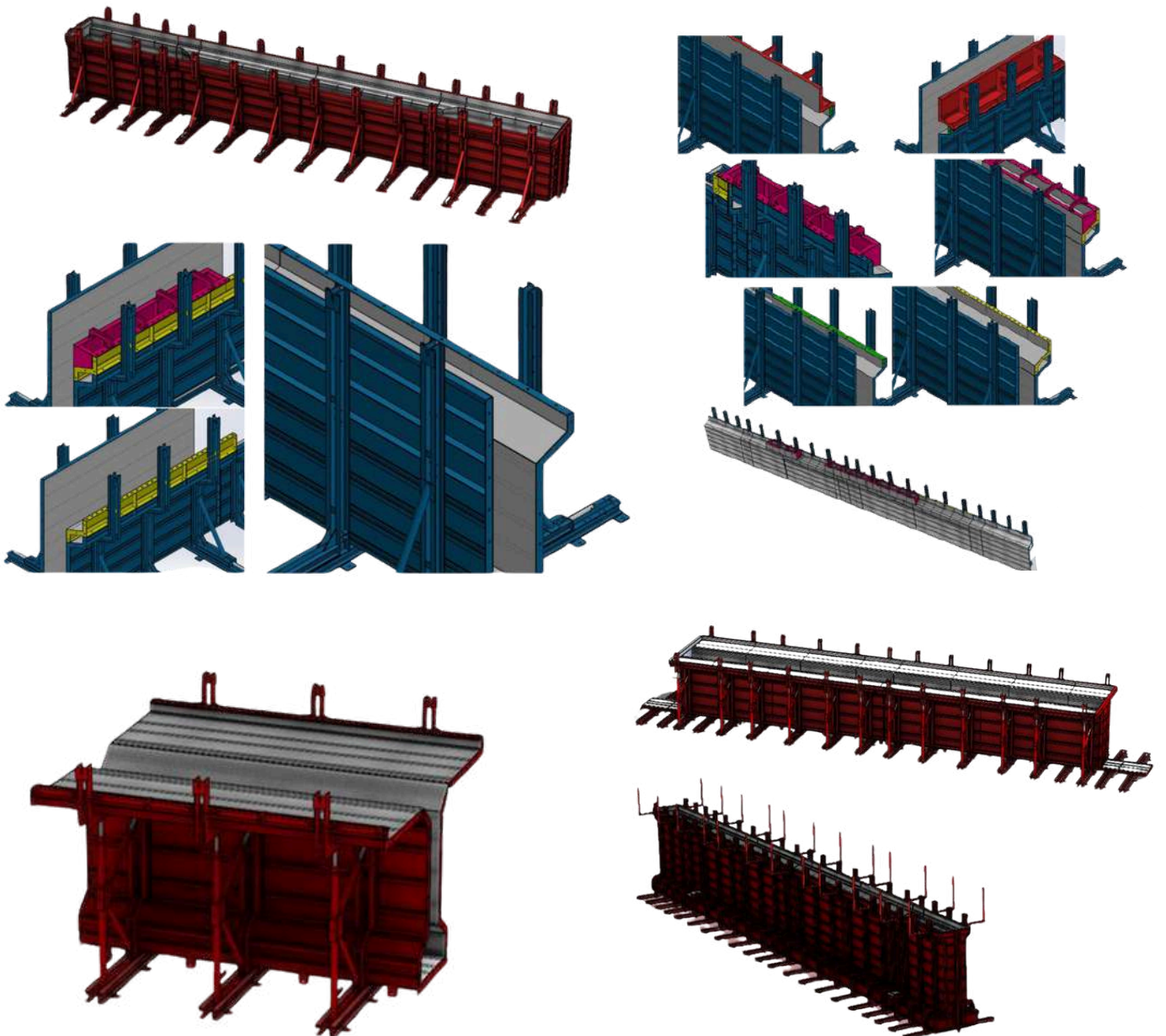


**2. Retraction system**



# Precast Steel Molds

## Products





# Precast Steel Molds

## Projects



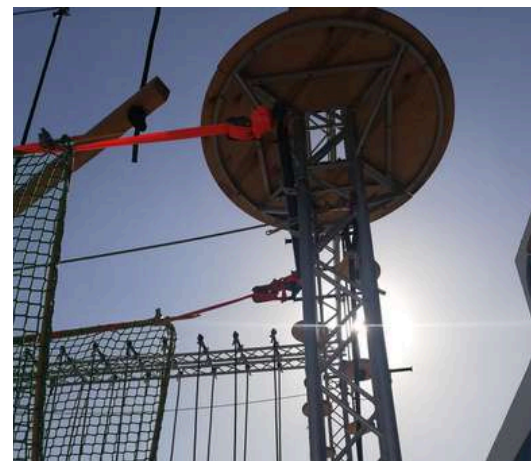


# Metal Tube Sectors



## Challenge Sports Frames

We've designed and manufactured game units that are easily disassembled and connected. From thrilling portable setups to dedicated areas for fixed games, like the ones found at the Monastery of St. Simon Al-Kharaz in the Mokattam Mountain. Get ready to embrace excitement and push your limits with our sports metal products

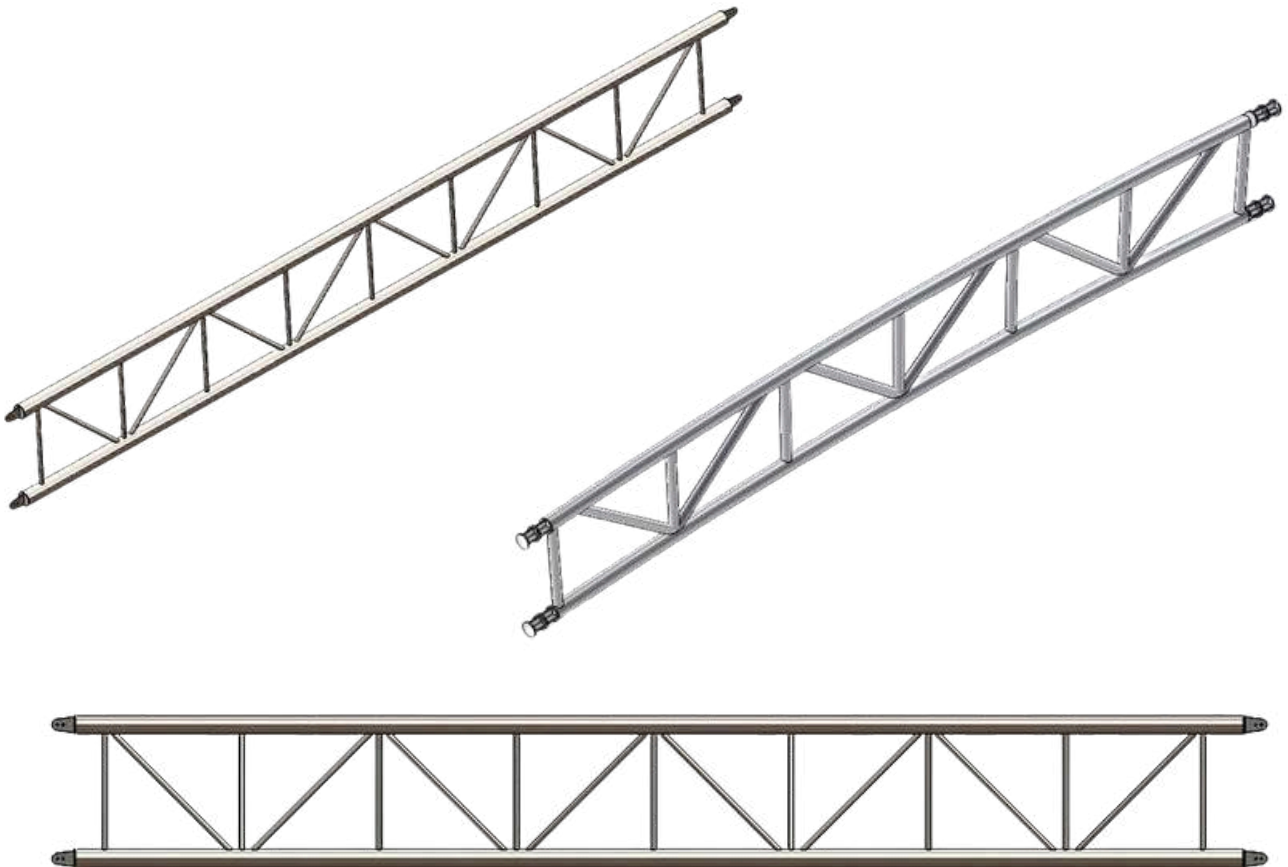




# Metal Tube Sectors



Life sports project





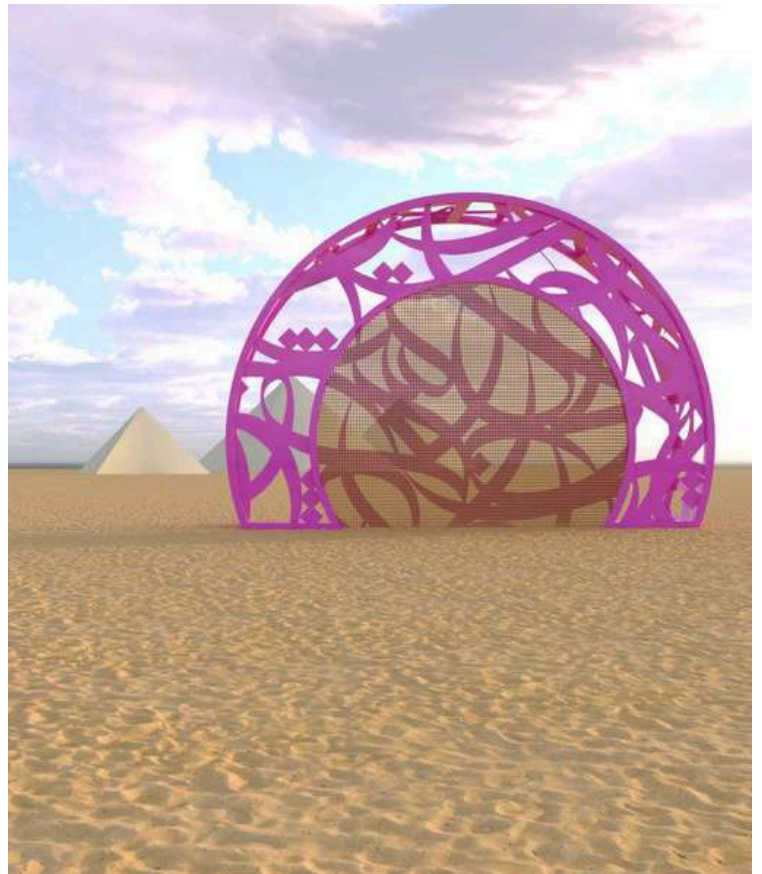
# Metal Tube Sectors

## Metal Arts



Metal Tube proudly presents a wide range of services in the field of Metal Arts:

- Outdoor arts:** where our expertise in metal production merges with artistic vision. Witness the remarkable Pyramid Gate project, where our team skillfully transformed an artist's ideas into a breathtaking reality
- Fencing:** creating elegant and durable metal fences that combine functionality with artistic flair.
- **Facade and industrial interior restaurant design:** Metal Tube's expertise shines, crafting captivating metal elements that elevate your spaces to new levels.





# Metal Tube Sectors

## Metal Storage Systems

Metal Tube is one of the most important and largest companies that produce storage containers of various dimensions, purposes and shapes, and we have the largest share in the Egyptian market.

With a wide range of dimensions, purposes, and shapes, we have three different storages offered for you.

- Knock-down Racking Pallets
- Flat Racking Pallets
- Fixed Pallets







# STANDS AND RACKS

Steel racks are the most effective way to optimize your space to get the most possible items in specific area

There are different types could be used to get the best results according to product shape , weight and client requirements.

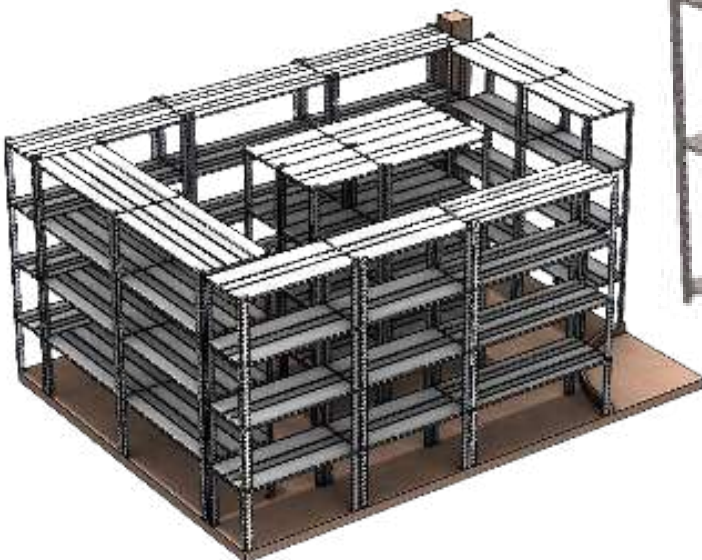
- All sheets and Tubes are made of steel (st .37 )
- Tubes are manufactured using longitudinal electric resistance welding (ERW).
- Tubes are cut using automatic saws .
- welding : CO2 Gas .
- Surface Preparation: sand blast .
- Final coating : electrostatic



# STANDS AND RACKS

## 1- Light weight racks

- **Sturdy Construction:** Made of heavy-duty steel, this variable number of shelving units is built to withstand light loads according to client demand.
- **Versatile Storage:** With adjustable shelves, it provides ample storage space for your garage, workshop, or workbench.
- **Industrial Design:** The sleek, industrial-style metal frame adds a modern touch to any space.
- **Easy Assembly:** This shelving unit requires minimal assembly, making it a convenient storage solution.
- **Average weight per shelf: 60 kg**

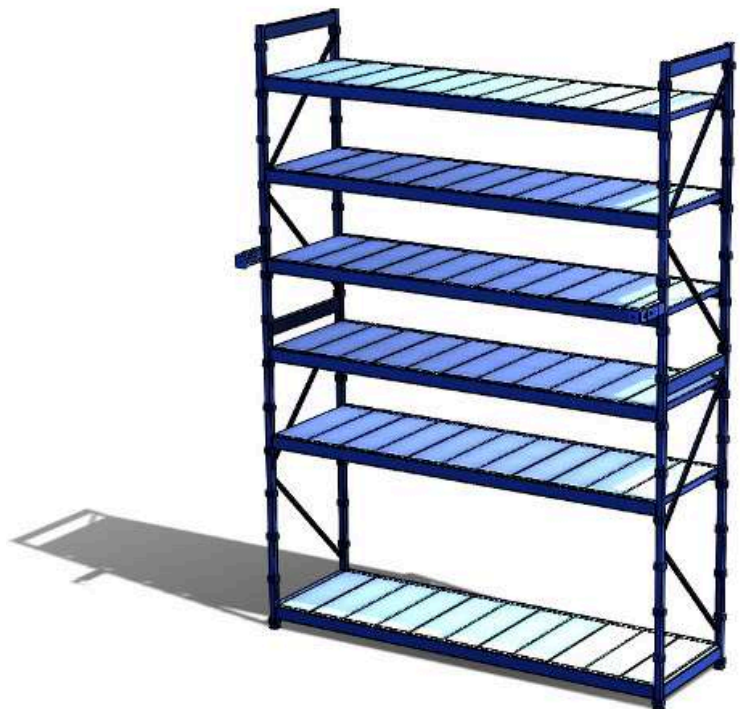




# STANDS AND RACKS

## 2- Heavy duty racks

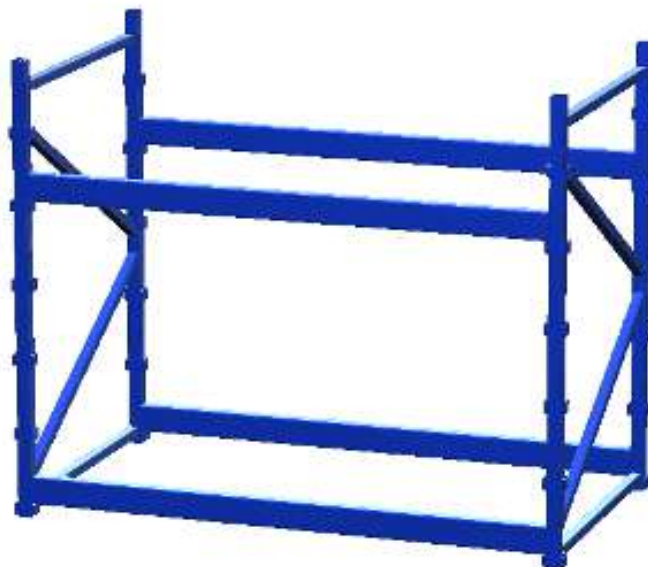
- **Sturdy Construction:** Made of heavy-duty steel, this variable number of shelving units is built to withstand heavy loads according to client demand.
- **Versatile Storage:** With adjustable shelves, it provides ample storage space for your garage, workshop, or workbench.
- **Industrial Design:** The sleek, industrial-style metal frame adds a modern touch to any space.
- **Easy Assembly:** This shelving unit requires minimal assembly, making it a convenient storage solution.
- **Average weight per shelf: 600 kg**



# STANDS AND RACKS

## 3- Pallet Racks

- **Sturdy Construction:** Made of heavy-duty steel, this variable number of shelving units is built to withstand heavy loads AND PALLET DIMENSIONS.
- **Versatile Storage:** With adjustable shelves, it provides ample storage space for your WAREHOUSE.
- **Industrial Design:** The sleek, industrial-style metal frame adds a modern touch to any space.
- **Easy Assembly:** This shelving unit requires minimal assembly, making it a convenient storage solution.
- **Average weight per shelf:** 1500 kg





# STANDS AND RACKS

## The basic model

- Standard equipment: chassis made of square tubing and a welded bottom tray. Side panels made from square tube frame with wire grate, inserted into chassis and screwed-into place.
- Castors: 4 Wanzl swivel castors, Ø 125 mm,
- Surface finish: high gloss, galvanised, electro-plated.

Length (mm)	900	1,300	1,700
Total load capacity (kg)			
Basic model with rear panel	200	300	300
Basic model without rear panel	100	150	150
Load capacity per shelf (kg)	75	75	75



**As standard:**  
The quality  
swivel castor  
from Wanzl



# STANDS AND RACKS

## The basic model

### Basic measurements

Length: 900 / 1,300 / 1,700 mm



Width: 467 / 625 mm



Height: 1,630 / 1,830 mm



### Static elements <sup>1</sup>

#### Fixed pole

The connecting tube is screwed-in between the two side panels on the top end.



#### Screwed-in shelf

The wire shelf is screwed-in between the two side panels on the top end. Mesh size 100 x 30 mm.



#### Handle (pair)

Made of steel pipe and clad in plastic. Paint: RAL 5002 Ultramarine blue and RAL 3000 Flame red.



#### Wire shelf

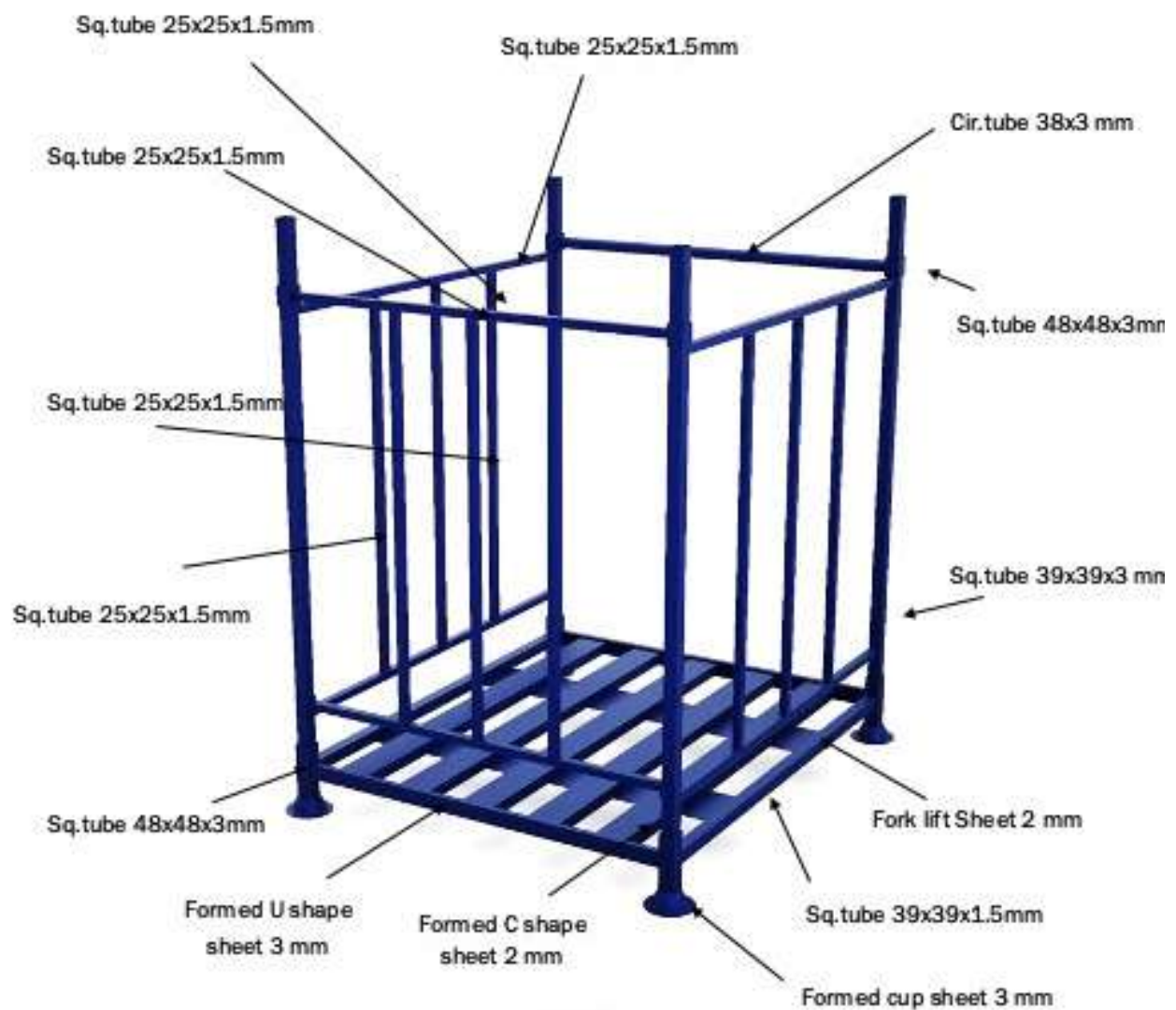
The shelves can be hung in 50 mm intervals. Mesh size 100 x 30 mm.





# STANDS AND RACKS

## Material Handling Equipment



# Cladding Mechanical Fixation System

Advanced mode of mechanical fixing system for stone cladding. From the selection of stones to the metal clamps used for fixing, we assure quality and professionalism. Having served prestigious clients in and around Egypt Metal tube remains a trusted brand and we deliver on time with unbeaten quality. 10 years of experience in stone cladding makes us the masters of the art and a reputed service provider in mechanical fixing stone cladding

All sheets are made of steel (st .37 ).

Tubes are manufactured using longitudinal electric resistance welding ( ERW).

Tubes are cut using automatic saws.

Welding : CO2 Gas .

Surface Preperation: sand blast .

Electrostatic Painting ( 80 – 100 ) micron

## Why stone cladding?

Stone cladding has been used to enrich your interiors and exteriors with luxurious aesthetics. Stone cladding also gives the prestigious antique look to your home or buildings. Stone cladding is that handcraft which gives deep artistic precision to your walls. Stone cladding makes your walls durable and strong. Stones are resistant to chipping and stones withstand harsh weather conditions. Stone cladding gives versatile look to your interiors. Another obvious advantage of stone cladding is that stones work as efficient heat insulators.







# Cladding Mechanical Fixation System

There are various types of stone cladding available. Mechanical fixing system for stone cladding has obvious advantages over wet fixing.

- A. Mechanical fixing gives enough room for expansion and contraction of natural stone.
- B. The adhesives may lose the bonding capability over time and chances of the stone falling is high.
- C. Adhesive materials will absorb more water and will result in colour fading. Thus, mechanical fixing system for stone cladding is highly preferred for its advantage



Advanced mode of mechanical fixing system for stone cladding. From the selection of stones to the metal clamps used for fixing, we assure quality and professionalism. Having served prestigious clients in and around Egypt, Metal tube remains a trusted brand and we deliver on time with unbeaten quality. 10 years of experience in stone cladding makes us the masters of the art and a reputed service provider in mechanical fixing stone cladding

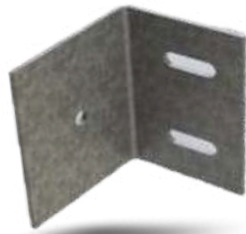
1	Brackets
2	Formed C Columns
3	Z-Brackets

4	Flange Tap Bolt
5	Supplements
6	Assembly

# Cladding Mechanical Fixation System

## 1. Brackets

**Concrete Bracket  
8 x 7**



**Concrete Bracket 13 B x 7  
(B for Back as they are attached to the back of the Corner formed C Column)**



**Concrete Bracket 13 F x 7  
(F for Front as they are attached to the Front of the Corner formed C Column)**



**Concrete Bracket 18 F x 7  
(F for Front as they are attached to the Front of the Corner formed C Column)**



**Block Wall Bracket  
8 x 7**



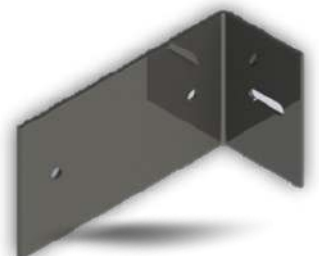
**Block Wall Bracket  
13B x 7**



**Block Wall Bracket  
13 F x 7**



**Block Wall Bracket  
18 F x 7**





# Cladding Mechanical Fixation System

## 2. Formed C Columns

All Columns are made of Steel 37, 4 mm Thick with slots accommodating both M8 & M10 Screws.

Front Column



Corner Column



# Cladding Mechanical Fixation System

## 3.Z-Brackets

Made of Steel 37 and galvanized to withstand weather conditions and tear.

Z-Bracket Height 2.5 cm, 3 mm Thick



Z-Bracket Height 10 cm, 4 mm Thick



## 4. Flange Tap Bolt

Made of Stainless Steel AISI 304, Its ring provides the seat for the marble tile.





# Cladding Mechanical Fixation System

## 5. Supplements

Primarily Used for marble tiles' anchoring at corners and junctions

T- Shaped Supplement



Ordinary Supplement (Adjustable Arm)



## 6. Assembly

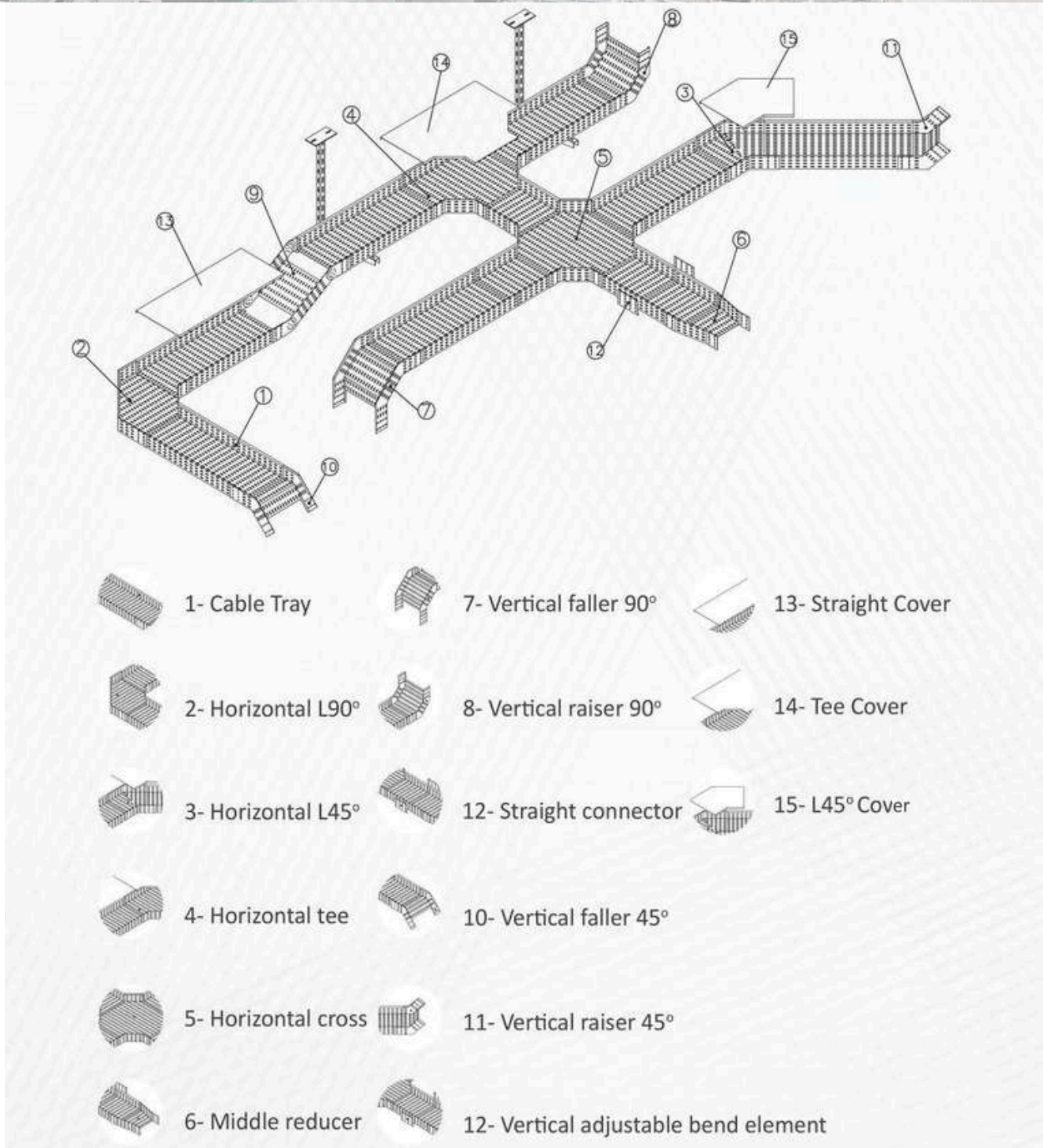


# Cladding Mechanical Fixation System





# Cable Trays System





# Cable Trays System

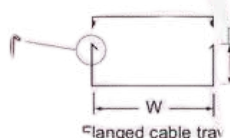
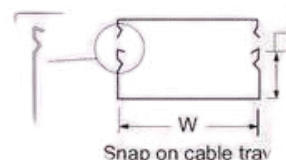
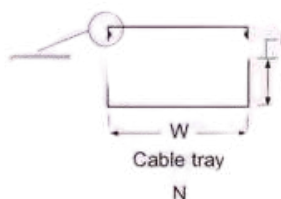
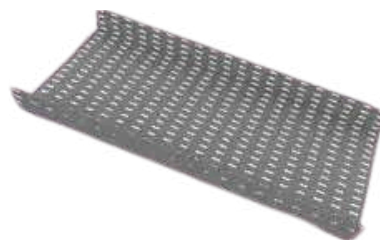
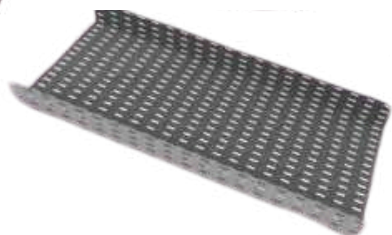
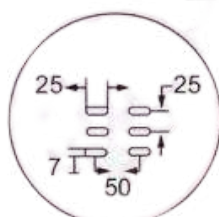
## Standard cable tray dimensions

Surface Coating		Flangetype	Width (mm)	Height (mm)	Thickness (mm)	Length (mt)
SPG	Pre-Galvanized	N F R	05 Up to 600	25 Up to 100	A 1.0	3
SHD	Hot-Dip Galvanized				B 1.25	
SPP01	Pre- Galvanized + Painted white				C 1.5	
SHP01	Hot-Dip Galvanized + Painted white				D 2.0	
SSS	Stainless Steel 304					

SHD F 200 100 C 3

### Code Sample

ay Hot dip galvanized standard flange 200x100x1.5 mm L/P=3m



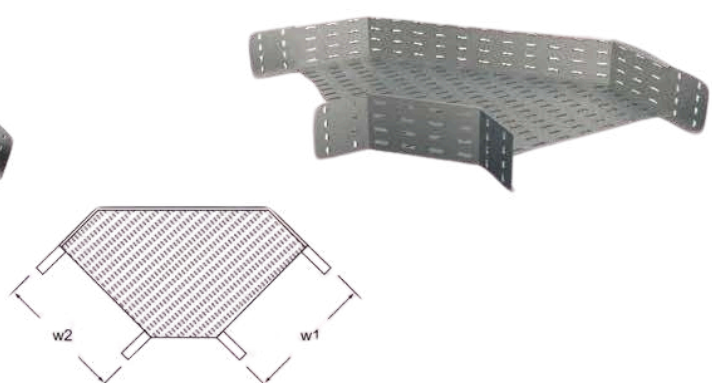
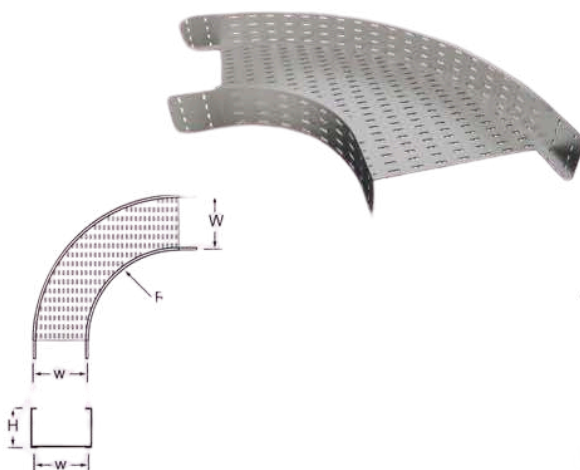


# Cable Trays System

## Standard cable tray Horizontal Bend 90° Connection

Surface Coating		Flangetype	Width (W1cm)	Width (W2cm)	Height (cm)	Thickness (mm)	Radius (mm)
LPPG	Pre-Galvanized	N	05 Up to 60		2.5 Up to 10	A 1.0	250
LPHD	Hot-Dip Galvanized	F				B 1.25	
LPPP01	Pre- Galvanized + Painted white	R				C 1.5	
LPHP01	Hot-Dip Galvanized + Painted white					D 2.0	
LPSS	Stainless Steel 304						

**Code Sample**  
Horizontal elbow 90° Tray Hot dip galvanized snap on flange 200/200x100x1.5 mm R=250



- Hot Dip Galvanized (After Fabrication) according to BS-EN-ISO 1461
- Hot Dip Galvanized (Before Fabrication) according to EN 10327
- Metal Cable Tray Systems According to NEMA VE1 2009

- Any other values of Radius can be arranged upon request
- For Curved type add ( C ) in the end of code
- Any further dimension and specs can be arranged on request
- for type R flanged minimum height is 50 mm
- Thickness 1.25mm is minimum recommended for Hot-Dip galvanized.
- For any size ,width must be greater than or equal to height

# Cable Trays System

## Standard cable tray Horizontal Bend 45 Connection

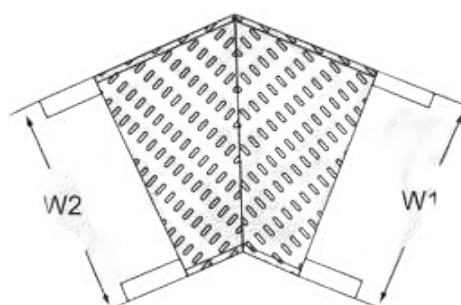
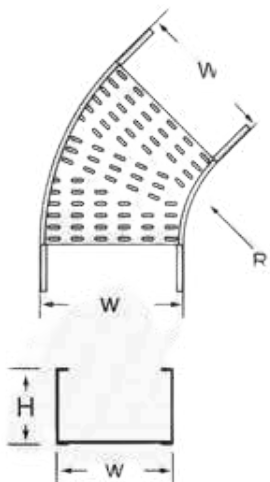
Surface Coating		Flangetype	Width (W1cm)	Width (W2cm)	Height (Hcm)	Thickness (mm)	Radius (mm)
VPPG	Pre-Galvanized	N	05 Up to 60		2.5 Up to 10	A 1.0	250
VPHD	Hot-Dip Galvanized	F				B 1.25	
VPPP01	Pre- Galvanized + Painted white	R				C 1.5	
VPHP01	Hot-Dip Galvanized + Painted white					D 2.0	
VPSS	Stainless Steel 304						

VPHD	R	30	30	7.5	C	250
------	---	----	----	-----	---	-----

**C o d e S a m p l e**

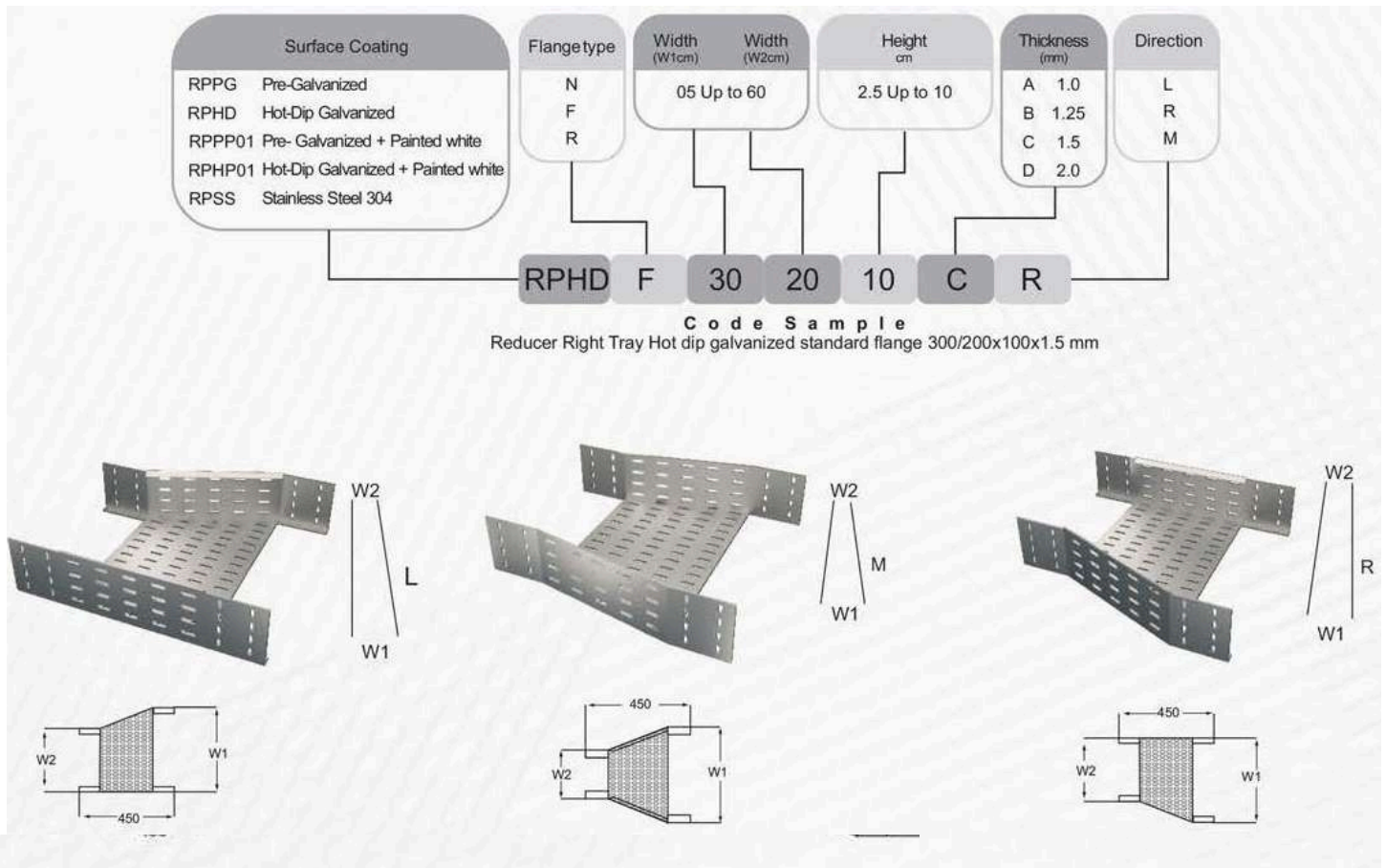
elbow 45° Tray Hot dip galvanized snap on flange 300 / 300 × mm R= 25





# Cable Trays System

## Standard cable tray Reducer Connection



- Hot Dip Galvanized (After Fabrication) according to BS-EN-ISO 1461
- Hot Dip Galvanized (Before Fabrication) according to EN 10327
- Metal Cable Tray Systems According to NEMA VE1 2009

- Any other values of Radius can be arranged upon request
- For Curved type add ( C ) in the end of code
- Any further dimension and specs can be arranged on request
- for type R flanged minimum height is 50 mm
- Thickness 1.25mm is minimum recommended for Hot-Dip galvanized
- for any size width must be greater than or equal to height

# Cable Trays System

## Standard cable tray Horizontal TeeConnection

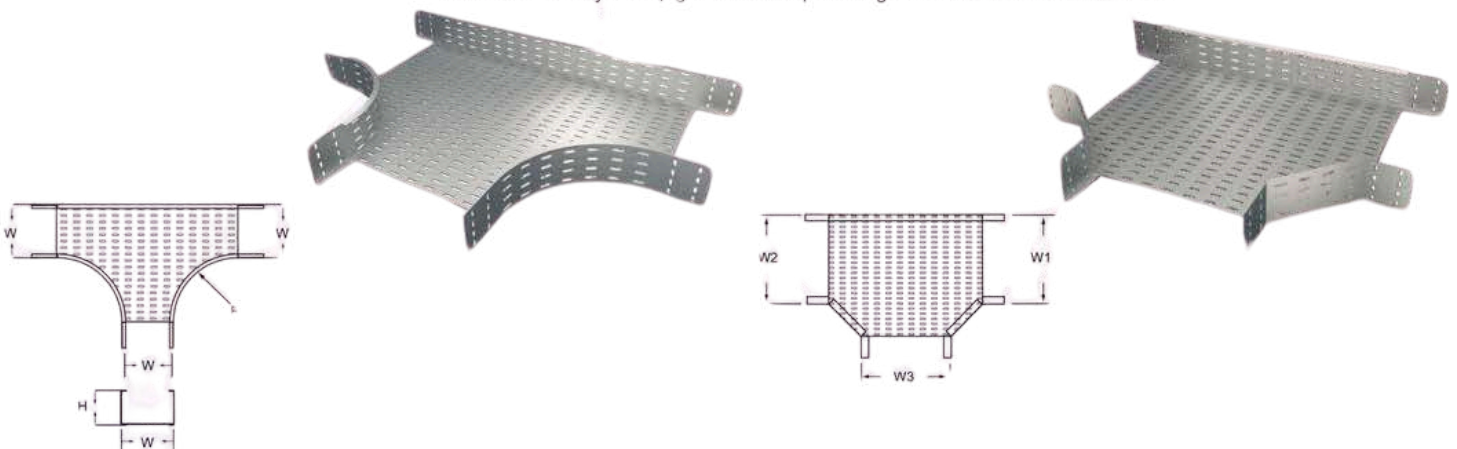
Surface Coating		Flangetype	Width (W1cm)	Width (W2cm)	Width (W3cm)	Height mm	Thickness (mm)	Radius (mm)
TPPG	Pre-Galvanized	N	05 Up to 60			2.5 Up to 10	A 1.0	250
TPHD	Hot-Dip Galvanized	F					B 1.25	
TPP01	Pre- Galvanized + Painted white	R					C 1.5	
TPHP01	Hot-Dip Galvanized + Painted white						D 2.0	
TPSS	Stainless Steel 304							

TPHD	R	40	40	40	10	D	250
------	---	----	----	----	----	---	-----

### Code Sample

Horizontal Tee Tray Hot dip galvanized snap on flange 400/400/400x100x2 mm R=250





# Cable Trays System

## Standard cable tray Horizontal XConnection

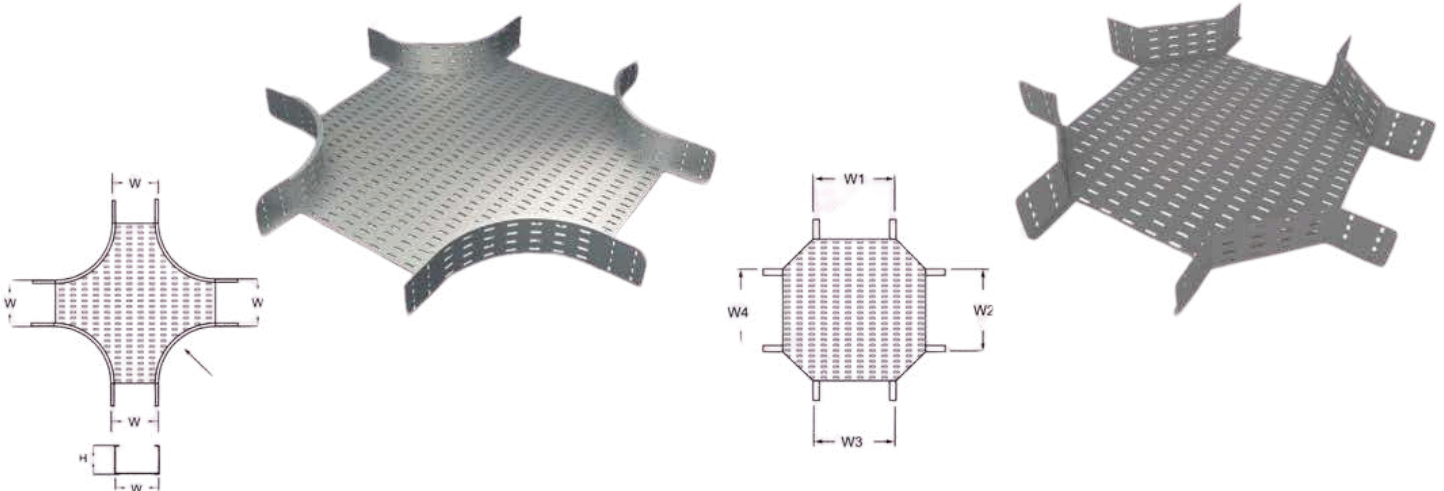
Surface Coating		Flangetype	Width (W1cm)	Width (W2cm)	Width (W3cm)	Width (W4cm)	Height cm	Thickness (mm)		Radius (mm)
XPPG	Pre-Galvanized	N	05 Up to 60				2.5 Up to 10	A	1.0	250
XPHD	Hot-Dip Galvanized	F						B	1.25	
XPP01	Pre- Galvanized + Painted white	R						C	1.5	
XPHP01	Hot-Dip Galvanized + Painted white							D	2.0	
XPSS	Stainless Steel 304									

XPHD	R	40	40	40	40	10	D	250
------	---	----	----	----	----	----	---	-----

### Code Sample

Horizontal Cross Tray Hot dip galvanized snap on flange 400 / 400 / 400 / 400 × 100 × 2 mm R= 250



- Hot Dip Galvanized (After Fabrication) according to BS-EN-ISO 146\*
- Hot Dip Galvanized (Before Fabrication) according to EN 10327
- Metal Cable Tray Systems According to NEMA VE1 2009

### Any other values of Radius can be arranged upon request

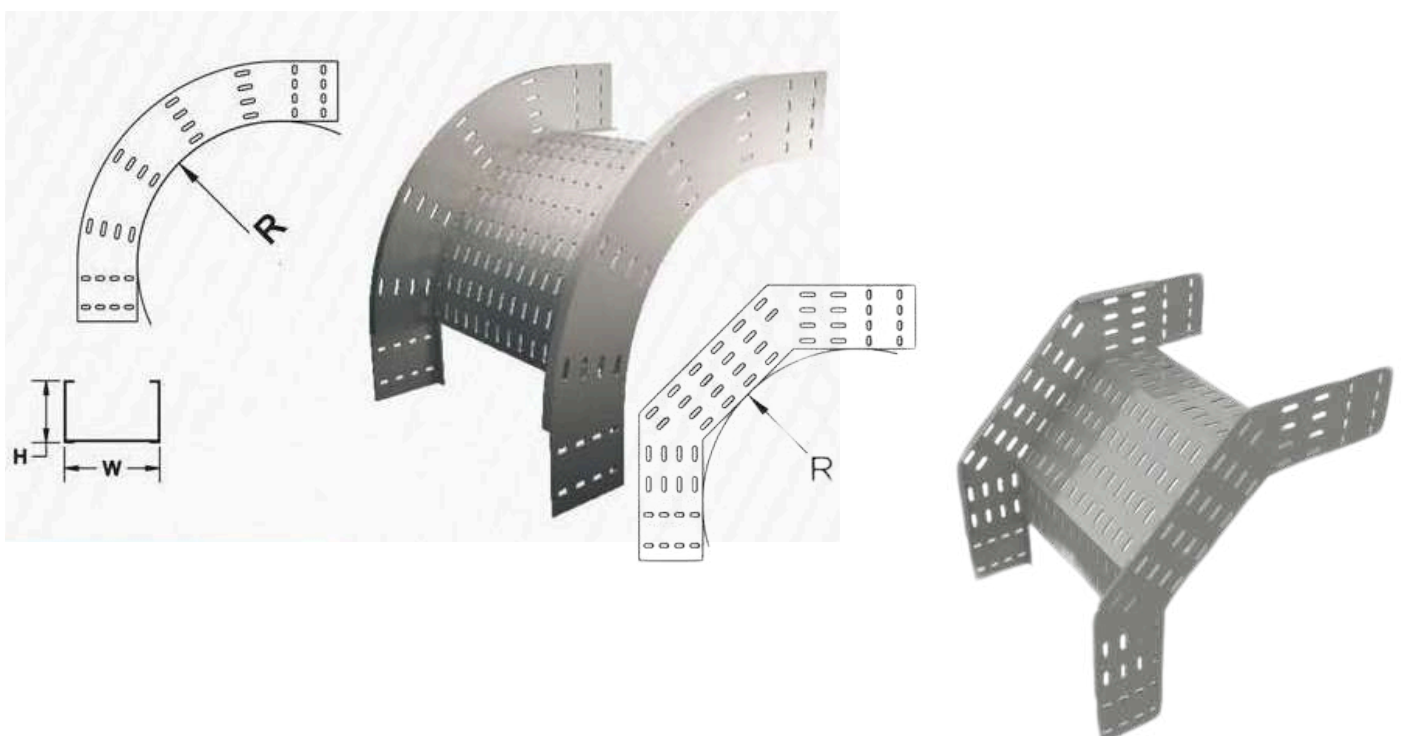
- For Curved type add ( C ) in the end of code
- Any further dimension and specs can be arranged on request
- for type R flanged minimum height is 50 mm
- Thickness 1.25mm is minimum recommended for Hot-Dip galvanized
- for any size width must be greater than or equal to height



# Cable Trays System

## Cable Tray Faller 90 deg

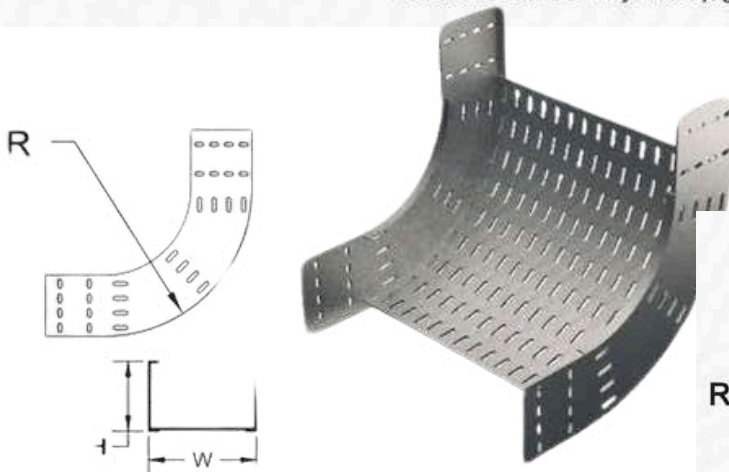
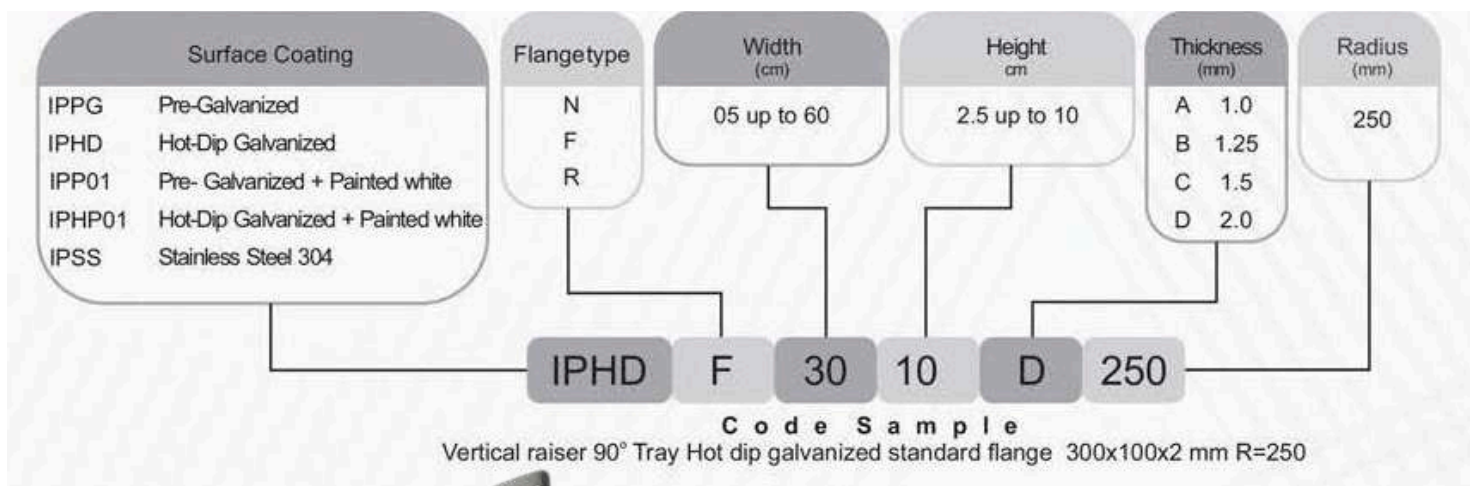
Surface Coating		Flangetype	Width (cm)	Height cm	Thickness (mm)	Radius (mm)
OPPG	Pre-Galvanized	N F R	05 up to 60	2.5 up to 10	A 1.0	250
OPHD	Hot-Dip Galvanized				B 1.25	
OPP01	Pre- Galvanized + Painted white				C 1.5	
OPHP01	Hot-Dip Galvanized + Painted white				D 2.0	
OPSS	Stainless Steel 304					
		OPHD F 20 10 D 250				



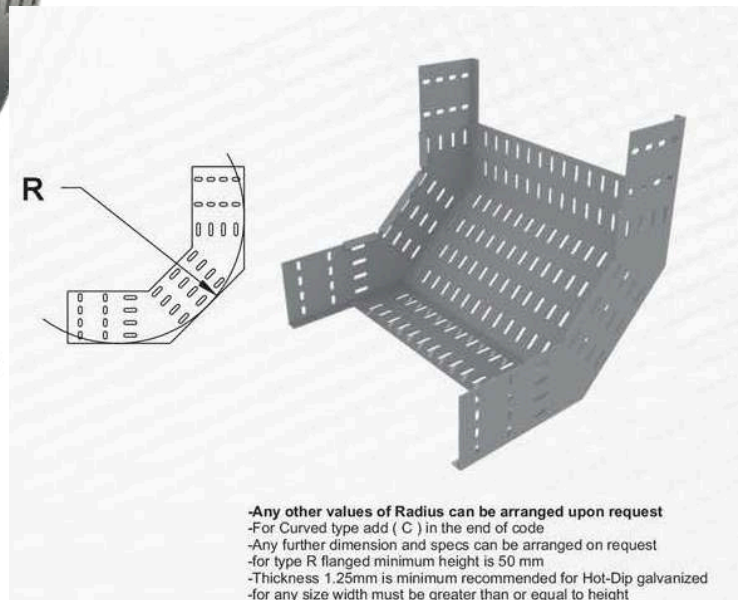


# Cable Trays System

## Cable Tray Raiser 90 deg.



- Hot Dip Galvanized (After Fabrication) according to BS-EN-ISO 146
- Hot Dip Galvanized (Before Fabrication) according to EN 10327
- Metal Cable Tray Systems According to NEMA VE1 2009



# Material Handling Equipment

## Air conditioning handler

- AC 1.5–2.5 HP



- AC 3–5 HP



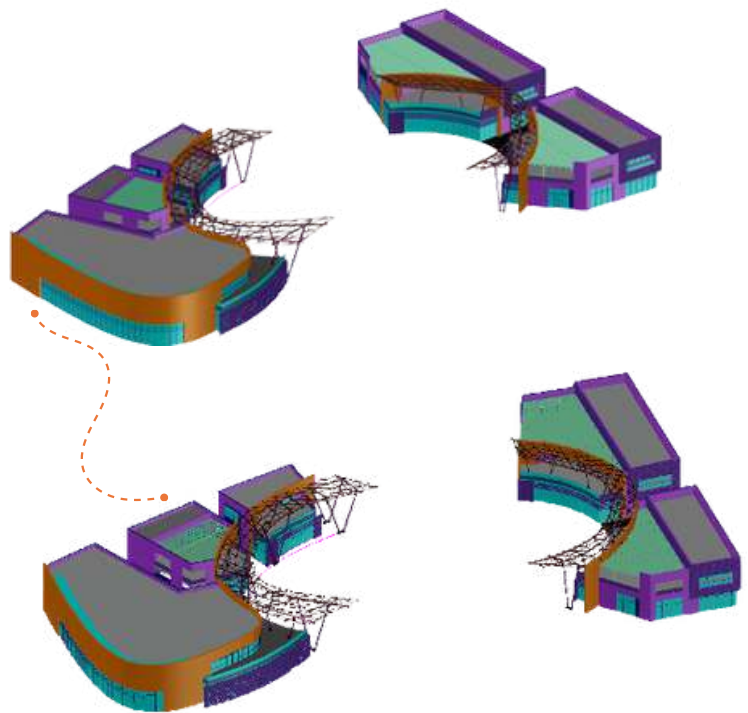


# Sky Walk Mall

## Sky walk canopy

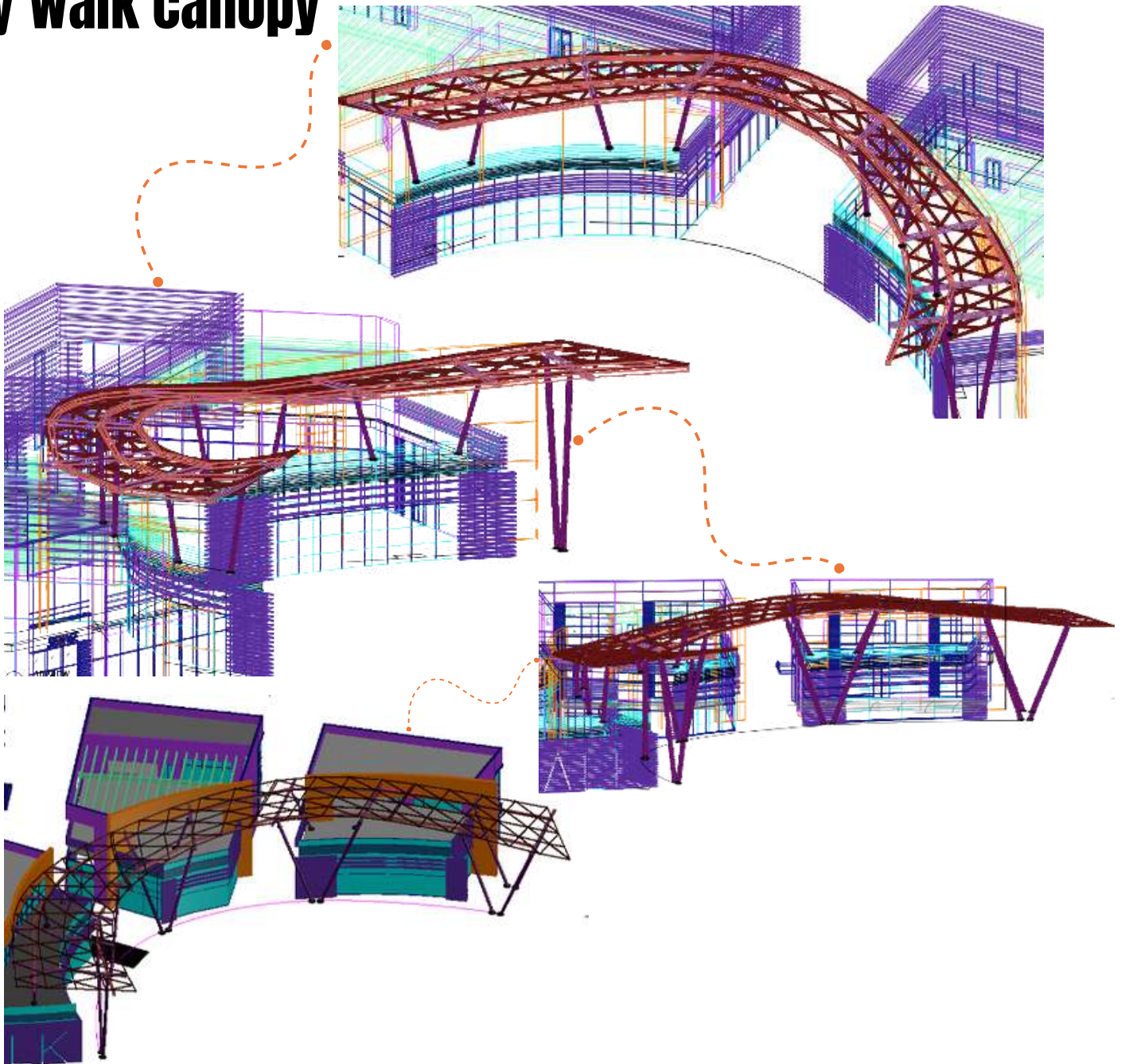
At Metal Tube, we design awnings, facades that leaves the first impression of any shopping mall

The designs requires more than just aesthetic design. It requires artistic mastery and architectural creativity that combines form and function, to create an unforgettable experience for visitors.



# Sky Walk Mall

## Sky walk canopy

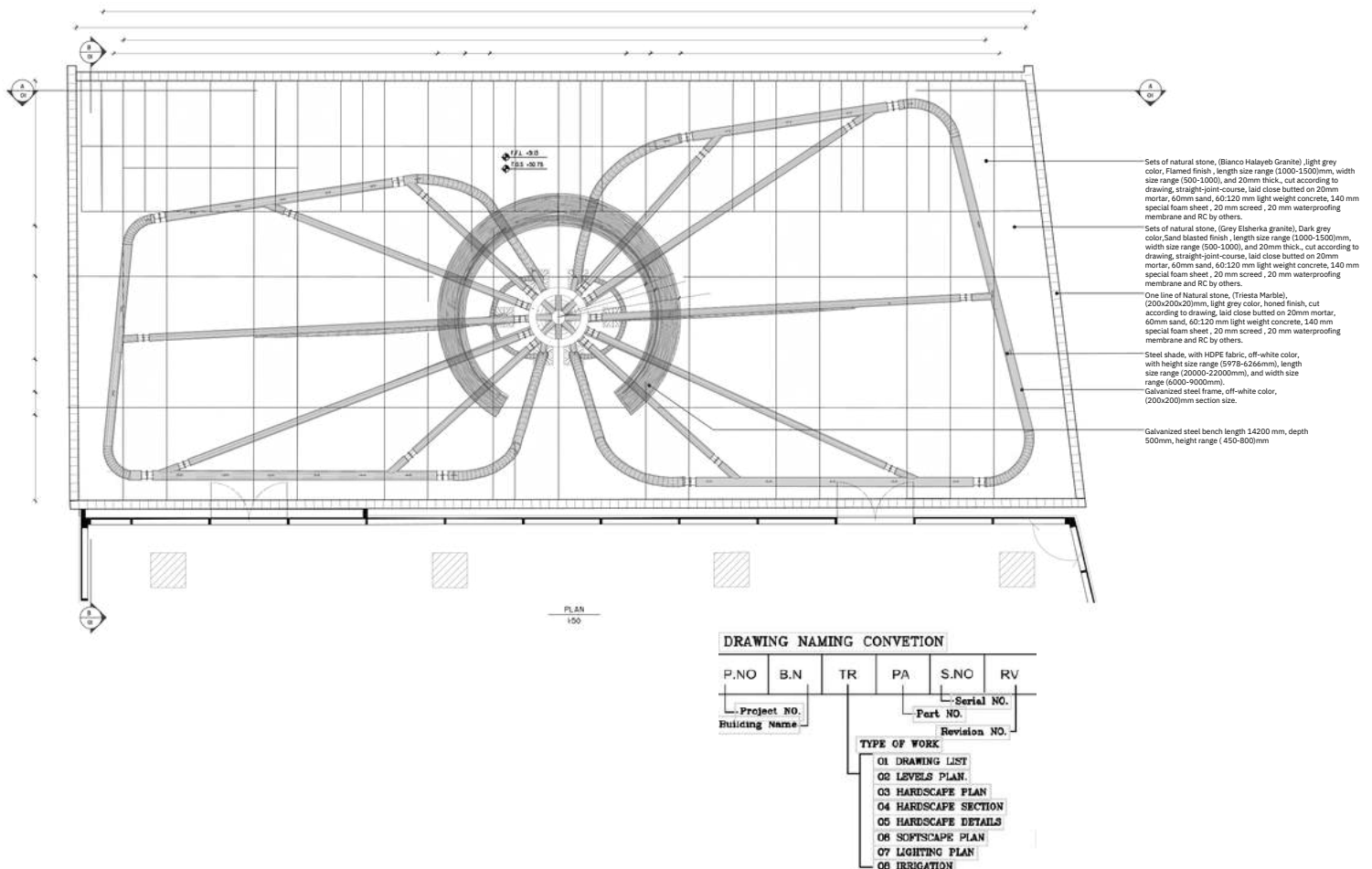




# Sky Walk Mall Mushroom Tents

## GENERAL NOTES :

- CONTRACTOR SHOULD COORDINATE WITH ALL TRADES.
- CONTRACTOR SHOULD PRODUCE SHOP DRAWINGS FOR APPROVAL, TAKING COORDINATION IN CONSIDERATION.
- IN CASE OF ANY DISCREPANCY CONTACT CONSULTANT FOR CLARIFICATION, DO NOT PROCEED WITHOUT CLARIFICATION.
- ANY DRAWING SHOULD BE STAMPED WITH OKOPLAN STAMP, OTHERWISE WILL NOT BE VALID.
- ANY DRAWING SHOULD BE SIGNED BY DIRECTOR MANAGER & PROJECT
- MANAGER, OTHERWISE WILL NOT BE VALID.



## Sky Walk Mall

Steel shade, with HCFE fabric, off-white color, with height size range (5978-6266mm), length size range (20000-22000mm), and width size range (6000-8000mm).

Galvanized steel bench length 14200 mm, depth 500mm, height range (450-800 mm).

171, 400, 130, 467.5

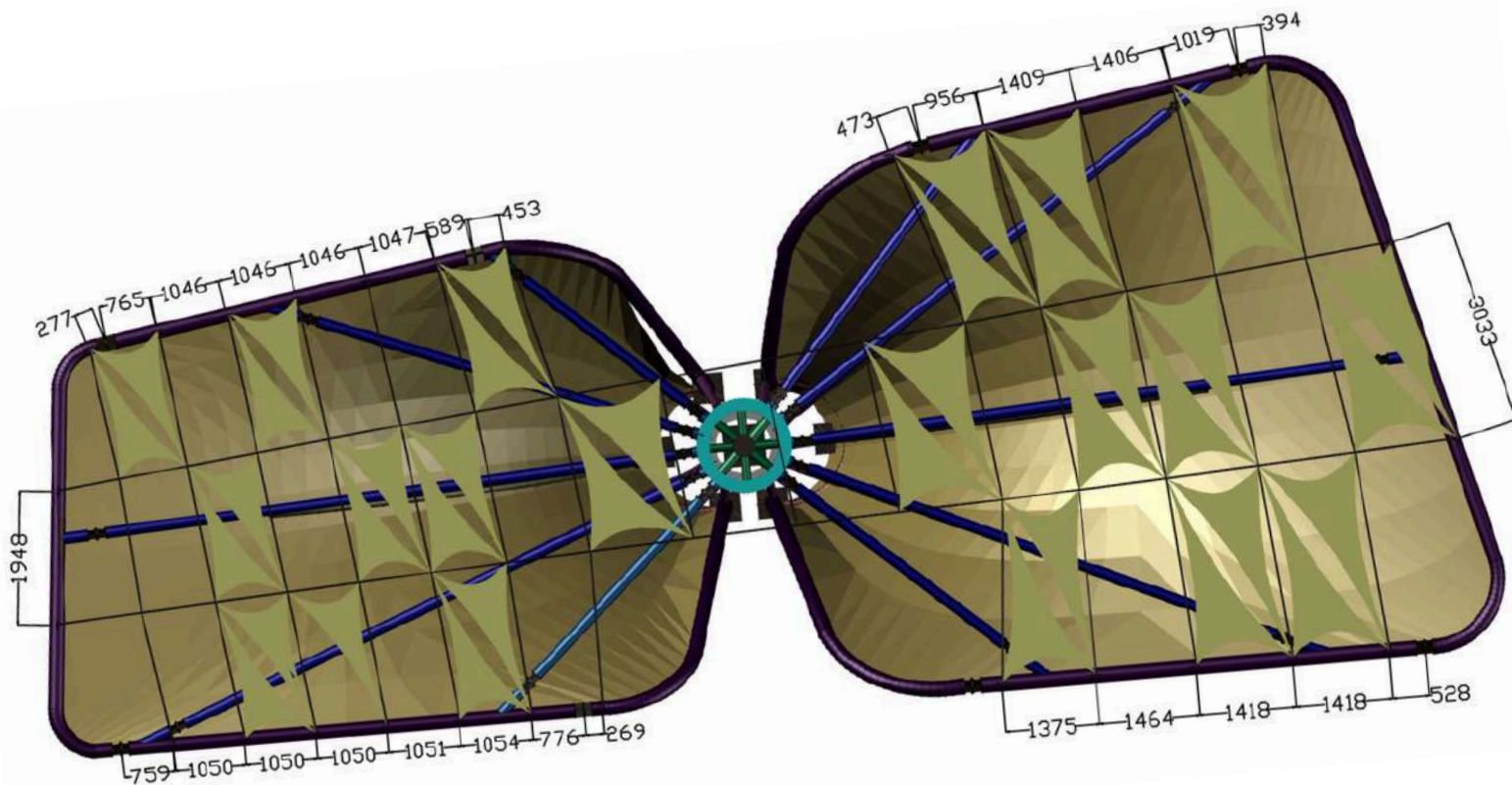
MUSHROOM TENT WITH SEAT SIDE VIEW



# Sky Walk Mall Mushroom Tents

## GENERAL NOTES :

- ALL DIMENSIONS ARE IN MILLIMETERS AND ALL LEVELS ARE IN METERS.
- ALL STRUCTURAL STEEL MEMBERS (SHS) SHALL CONFIRM TO STEEL 37.
- ALL STRUCTURAL STEEL PLATES SHALL CONFIRM TO STEEL 37.
- ALL WELD IS FILLET WELD & SIZE OF WELD = 4mm U.N.O.
- ALL STRUCTURAL STEEL PIPES & PLATES SHALL BE PAINTED AS PER SPECIFICATION.





# Sky Walk Mall Mushroom Tents

## Projects



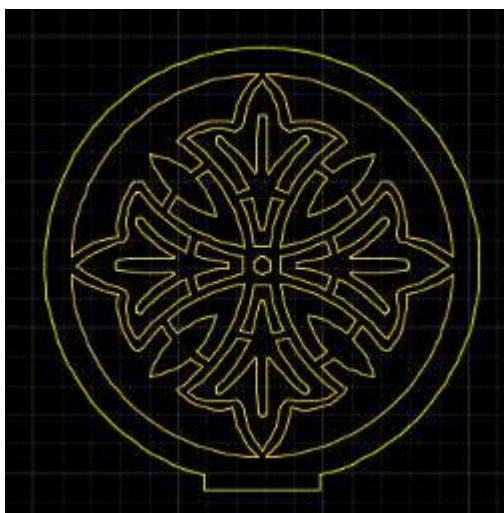


# Laser Products

Church gate and fence



Cross for occasions





# Laser Products

## Christmas decorations





# Laser Products

## Metal tools



## Mobile holder

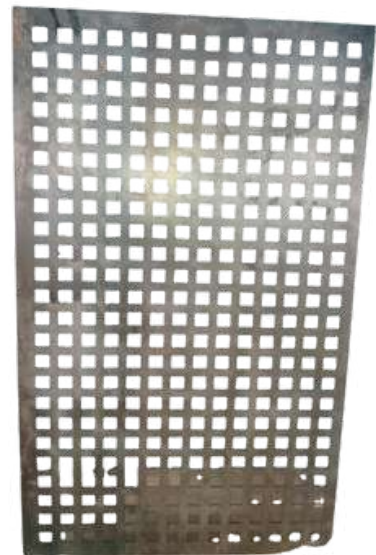


## Door Signs



# Laser Products

## Metal tools





# Products

## 1- Steel Structure

### Forging Strong Foundations

Steel structures, the epitome of modern engineering, blend strength and versatility seamlessly. Resilient frameworks for architectural marvels, industrial powerhouses, and more, our steel structures stand as icons of durability, precision, and limitless possibilities in construction.



## 2- Garbage Chutes

### Waste Managed, Hassle-Free

Our garbage chutes introduce efficiency to waste disposal. Designed for seamless integration, they offer a hygienic and convenient solution. From residential to commercial spaces, our chutes ensure waste management is both discreet and effortless.



## 3- Access Hatches

### Gateway to Accessibility

Our access hatches redefine convenience, providing secure yet effortless entry points. Crafted with precision, they seamlessly blend function with aesthetics, enriching spaces with easy access while maintaining utmost safety and durability.



# Partnerships





# Certificates

## Quality Management and Certificates:

Metal Tube commitment to safety and quality starts before products are manufactured, we use a range of testing equipment and procedure to ensure that only the highest quality materials are approved for manufacturing.

Since the outset of our enterprise, quality has been the most crucial principle of production.

We engineer safety performance and quality into every piece of scaffolding and framework we manufacture and our scaffolding products fully adhere to international and local regulations.



# Reviews

**ORASCOM**  
CONSTRUCTION INDUSTRIES



الصور للخدمات الطبية والتعليمية  
**OBOUR**  
For Medical & Educational Service

www.abour.com

التاريخ : ٢٠١٣/١١/١٧

## شهادة

الى من يهمه الامر ...

نشهد شركة / اوراسكوم للإنشاء والصناعة اننا قد تعاملنا مع شركة "ميتال تيوب" لتسليم المقاطع والشبكات المعدنية على مدى ١٠ سنوات بحجم أعمال كبير، ولها شركة ملتزمة التزاماً بال جودة والمواصفات القياسية العالمية وايضا ملتزمة بمواعيد التسليم - كما اننا لم نواجه معهم أي معوقات تعوق إتمام العمل المشترك بيلسا بنجاح تام، ولقد بلغ حجم تعاملاتنا في قطاع الشبكات المعدنية في حدود مبلغ ٣٠ مليون جنية مصري تقريبا.

منذ إنشائهم مصنعهم للشبكات المعدنية في عام ٢٠٠٩ إلى الآن على جميع أنواع قطاعات الشبكات (Simple Frame System ، Cuplock System ، U- Head ، B- Head Jack Head ، And All Scaffolding Systems Accessories)

وتفضلوا بقبول وافر الاحترام ...

أوراسكوم  
للإنشاء والصناعة

٤/٤

التاريخ : ٢٠١٣/١/٥

السادة / شركة ميتال تيوب

تحية طيبة وبعد ،،،

نتقدم شركة العبور للخدمات الطبية والتعليمية بالشكر لشركتكم الموقرة على دقة وحسن التوريدات الخاصة بالأعمال الحديدية والتي شملت الكوبري الحديدي وسلالم الطوارئ وتكسية المواسير الخارجية للتكييف المركزي وكذا الشاسيهات الخاصة بالتركيب الميكانيكي للرخام للواجهات الخارجية والداخلية وكل الهياكل الخاصة باللوحات والياقطات في مستشفى فريد حبيب التي تملكها الشركة .

وتفضلوا بقبول وافر الشكر والتقدير ،،،

رئيس مجلس الإدارة

الصور للخدمات الطبية والتعليمية  
**OBOUR**  
For Medical & Educational Service

تليفون : ٤٦١٤٢٠٠٠٠

مدينة العبور - الحي الخامس - قطعة ٥ بلوك ١٦٠٨١





# Reviews



# Reviews



السادة شركة ميتال تيوب

تحية طيبة مع صادق الدعاء، وبعد،،

يسر المركز الثقافي القبطي الأرثوذكسي أن يقدم الشكر لشركتكم الموقرة على إتمام عمل الهياكل ومستلزمات التركيب الميكانيكي كالحجر الهاشمي والرخام الداخلي والخارجي في مبني المركز الكائن بأرض الأنبا رويس بالعباسية بدقة ونجاح والالتزام بمواعيد التوريد.

شاكرين حسن تعاونكم معنا  
مع خالص شكري وتقديري،  
والمزيد من التقدم والأزدهار،

تحريراً في ٢٠/٣/٢٠٠٩م

  
الأنبا روميا  
الأسقف العام  
رئيس المركز الثقافي القبطي الأرثوذكسي

Coptic Orthodox Cultural Center  
Coptic Orthodox Patriarchate-Anba Rueiss.  
222 Ramsis St, Abbassiya, Cairo, Egypt.  
Phone: + (202) 2488 2530 - 2482 6163  
Fax : + (202) 2685 5541  
E-mail: info@copticocc.org

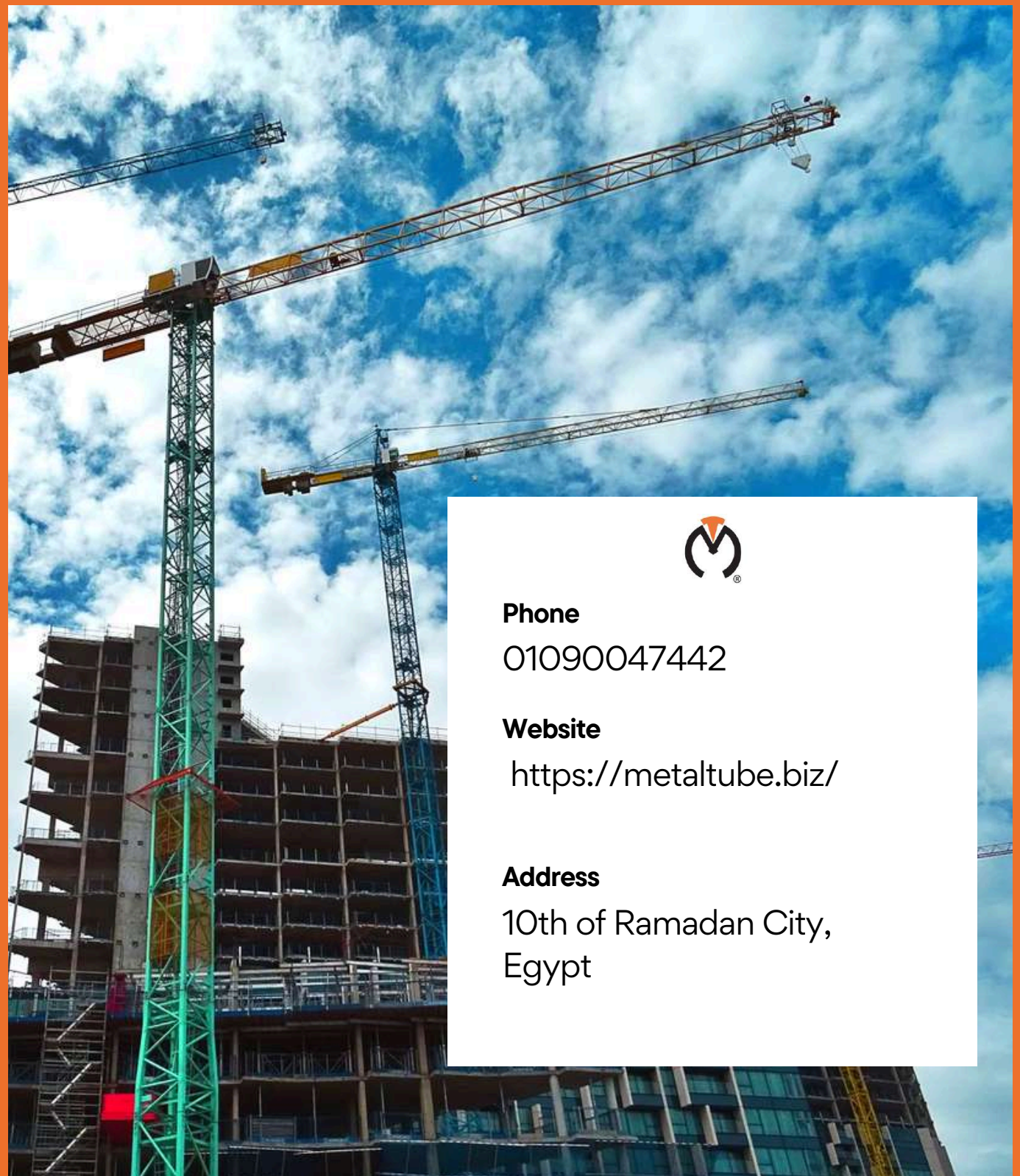
www.copticocc.org

المركز الثقافي القبطي الأرثوذكسي  
القائمية المرقسية بالأنبا رويس  
٢٢٢ شارع رمسيس بالعباسية - القاهرة - مصر  
تليفون: ٢٤٨٨ ٢٥٣٠ - ٢٤٨٢ ٦١٦٣ (٠٢)  
فاكس: ٢٦٨٥ ٥٥٤١ (٠٢)  
البريد الإلكتروني: info@copticocc.org





# CONTACT US



**Phone**

01090047442

**Website**

<https://metaltube.biz/>

**Address**

10th of Ramadan City,  
Egypt